

*Between 1987 and 1995, the museum "Arbeiterleben" demonstrated the living and working conditions of labours in Berlin's district Prenzlauer Berg. Until 2000, the permanent exhibition of "Stube, Kammer and Kueche - the workers life around the 1900`s" was opened by an initiative of active retired people.*

*Members of the association 'Seniorenvertretung of Pankow' integrated part of "Herbstlaube" (an organisation sponsored by the commune) and the museum of Prenzlauer Berg established an exhibition focused on the life, living and working conditions around the 1900s' century in the district of Prenzlauer Berg.*

*With the support of a public association "Quartiersmanagement Helmholtzplatz", "Wohnungsbaugesellschaft" Prenzlauer Berg (WIP), foundation "Stadtmuseum", active handicraft and other individual persons, a project group prepared an exhibition in an old "Mietshaus" (apartment building) in spring 2003. This "Mietshaus" is located at Dunkerstr 77, near Helmholtzplatz in the Prenzlauer Berg district.*

Miteinander  
Füreinander

Selbsthilfebegegnungsstätten e.V.

**Miteinander-Füreinander  
(Together for Eachother)  
Selbsthilfebegegnungsstätten e.V.**

10437 Berlin  
Dunckerstraße 77, 10437 Berlin  
Phone: 030 - 445 23 21  
Fax: 030 - 50595032  
[www.mitundfuereinander.de](http://www.mitundfuereinander.de)  
[www.ausstellung-dunckerstrasse.de](http://www.ausstellung-dunckerstrasse.de)  
email: [info@mitundfuereinander.de](mailto:info@mitundfuereinander.de)

**For all donations:  
Bank fuer Sozialwirtschaft  
BLZ 100 20 500  
No 335 1600  
Member of "Paritätischen  
Wohlfahrtsverband"**

**Carpenter Brunzel constructs  
an apartment building**

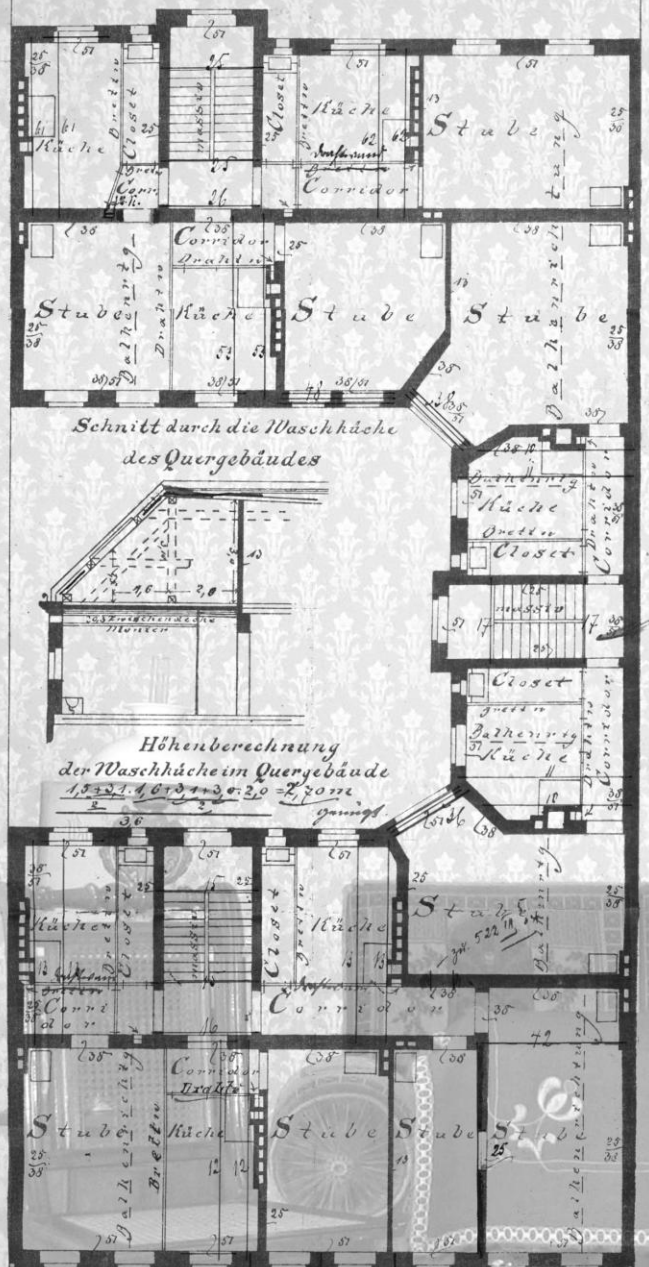
**Building and Living in  
Prenzlauer Berg in the 19<sup>th</sup> century**

**- Permanent exhibition**

**Supported by the municipal body  
'Senatsverwaltung für  
Stadtentwicklung' 'Viola Stiftung'  
and 'Bezirksamt Pankow'**

**Opened 2003, 12th September on the  
occasion to celebrate the "Tag des  
offenen Denkmals"**

**Sponsored by  
Miteinander-Füreinander  
Selbsthilfebegegnungsstätten e.V.**



### Opening hours:

Mon., Tue., Thur., Fri., Sat.

and Sun. 11.00 to 16.30

Visits are also possible on

request outside business

hours. Phone 030 4452321

### Public Transport Connection:

- S-Bahnhof Prenzlauer Allee, Lines 8,41,42,85
- U-Bahnhof Eberswalder Straße, Line 2
- Tram M2,M10,12

The permanent exhibition 'Carpenter Brunzel Constructs an Apartment Building - Constructing and Living in the 1900s' - shows the history of the apartment building and former inhabitants of Dunckerstrasse 77. The building is located near Helmholtzplatz which is in the centre of the Prenzlauer Berg district.

The exhibition focuses on various aspects linked to Berlin's immigration and the development of the region around Helmholtzplatz. The museum and its collection demonstrate living and working conditions around in the 1900's in Berlin's North Eastern section.

Various historical collection items, about the history of Berlin's Prenzlauer Berg district, such as photos, documents, post cards, maps and authentically furniture are displayed. They demonstrate the typical living conditions found in the 1900s'.